

WORKING BIKES

Giving old bikes new homes since 1999.



WHAT DO WE DO?

Recycle bicycles that have been lost, discarded or neglected.



WHERE DO THEY COME FROM?

Bike drop off locations across the Chicago area and the Midwest

Apartment buildings, police departments, and universities

Bike drives hosted by churches, youth groups, companies, and recycling groups

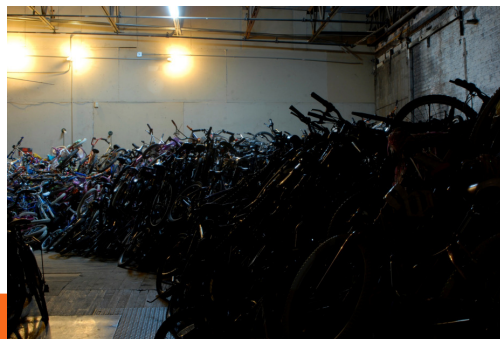


HOW MANY?

We recycle about 8,000 bikes per year

We donate about 6,500 bikes per year

The rest are used for parts, or sold in our shop



BIKES ON THE SHIPPING DOCK



OVERFLOW BIKE STORAGE



MANAGER PAUL KEEPING IT AN ORGANIZED CHAOS

WORKING BIKES SELLS BIKES?

Volunteers and staff mechanics fix a portion of our bicycles to be sold locally, generating the revenues that sustain our organization.



THEN WHAT?

Using our store revenues, we ship bikes to partner organizations abroad, and repair bicycles to be donated locally.

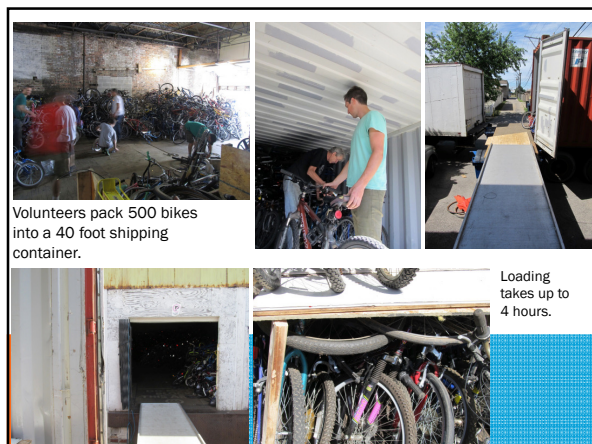


VOLUNTEERS

Working Bikes' weekly volunteer sessions are Tuesday (5-9pm), Wednesday (12-5pm), and Saturday (12-5pm).

Volunteers repair bikes for our local donation program, help run our storefront, represent Working Bikes at events, assist with organizational and cleaning projects, and pack bikes into shipping containers for our international partners.





WHY ARE BIKES SO IMPORTANT?

Bicycles provide:

A source of transportation to school, work, and medical care

Employment and micro-enterprising opportunities

Mechanical power for individuals living without electricity



WHERE DO THEY GO?

Locally:

Homeless transition programs
Refugee resettlement programs
Schools
Youth empowerment programs

Internationally:

Africa South America
Central America Caribbean

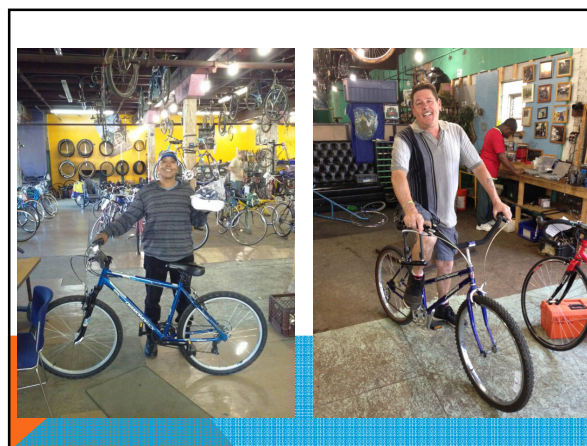
WHO ARE THE RECIPIENTS?

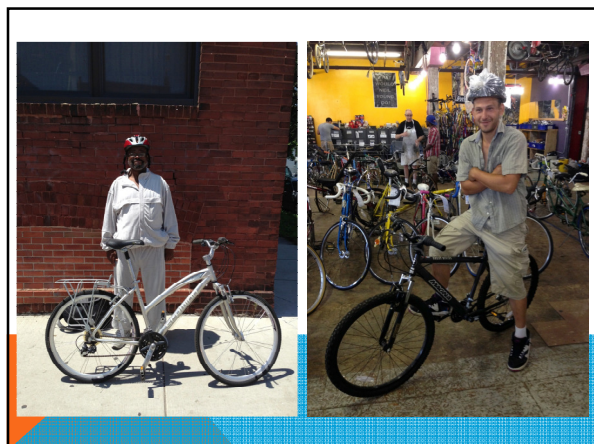
Local recipients include:

+Refugee One
+Heartland Alliance
+Better Boys Foundation
+Thresholds
+Hines VA
+Renaissance Social Services



+Jane Addams Resource Center
+Women in Trades
+Broadway Youth Center
+Chicago Help Initiative
+WorldRelief





WHO ARE THE RECIPIENTS?



International partners include:
 Village Bicycle Project in Ghana
 B.E.N. in South Africa & Namibia
 Global Goodwill in Panama
 CESTA in El Salvador
 ANNV in Nicaragua
 Bikes for Lesotho in Lesotho
 AKP in Zambia





WANT TO GET INVOLVED?

Volunteer.
Donate.
Organize a bike drive.
Spread the word.



QUESTIONS?



2434 S Western Ave
Chicago, IL, 60608
773-847-5440
www.workingbikes.org
info@workingbikes.org