



ILLINOIS BIKE SUMMIT
FIFTH ANNUAL

September 19, 2016
Bloomington, Illinois

Lessons From the Mississippi & Elsewhere... Multi-Recreational Trails

George S. Bellovics
Landscape Architect
Grand Illinois Trail Coordinator



ILLINOIS
DEPARTMENT OF
NATURAL RESOURCES

What's Your Perception?

It's the System that Works...

Trail Philosophy...

Trail

Trail R.O.W.

City Town Village

County


State

Region

Country

World

...LET'S TRAVEL BACK IN TIME...



Mississippi River ~ Long Ago

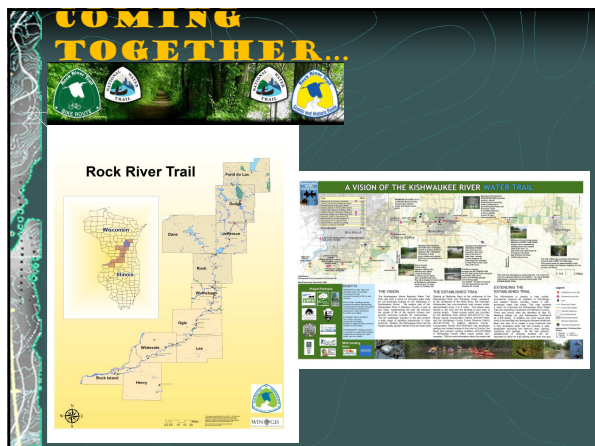
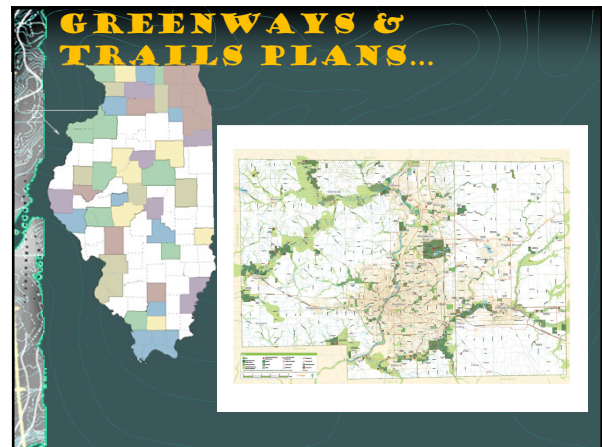
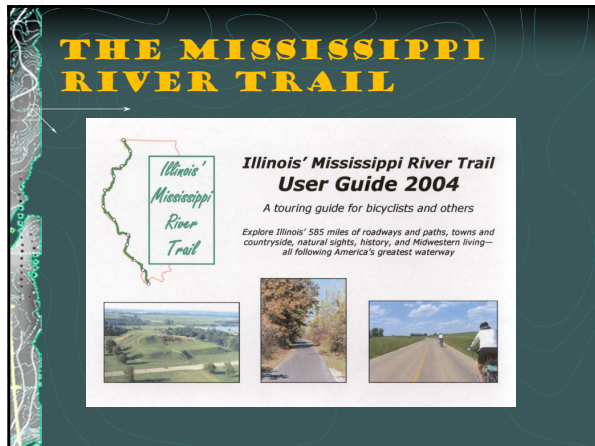
The image displays two historical maps of the Mississippi River region. The left map, titled "THE FAR WEST 1800-1810", shows the river's course from the Gulf of Mexico to the Rocky Mountains, with a legend for "By Lewis & Clark", "By Pike", and "By other explorers". The right map, titled "LOUISIANA 1763-1803", shows the river's course from the Gulf of Mexico to the Canadian border, with a legend for "By Lewis & Clark", "By Pike", and "By other explorers".

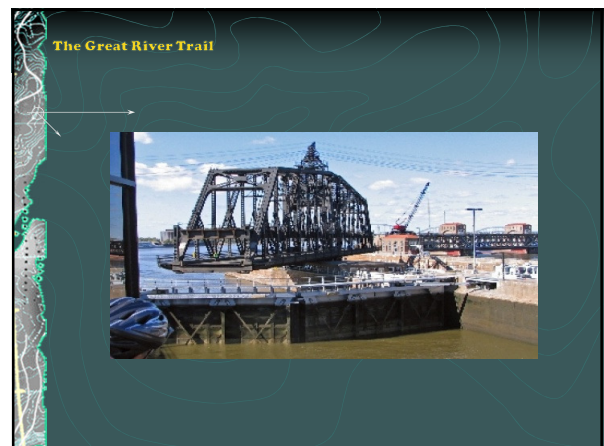
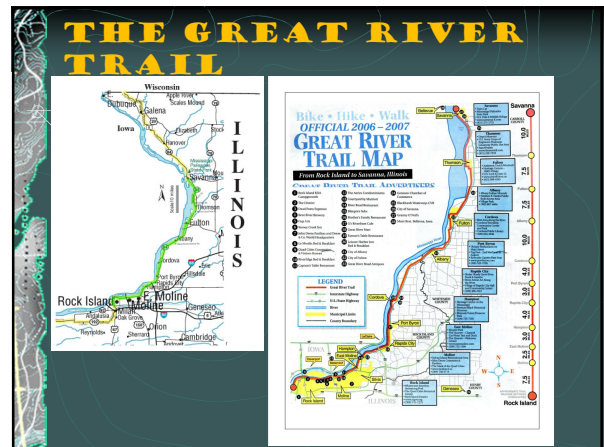
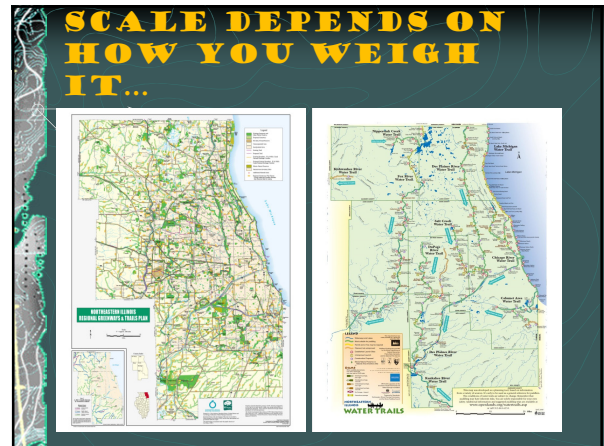
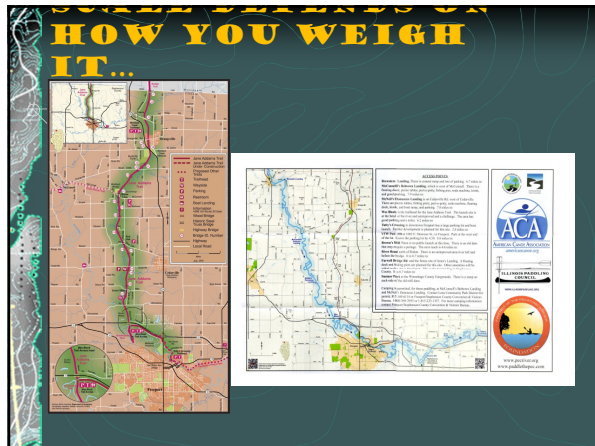
Slide 2

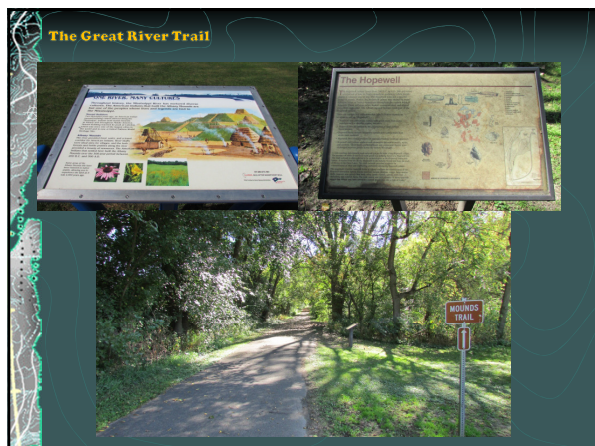
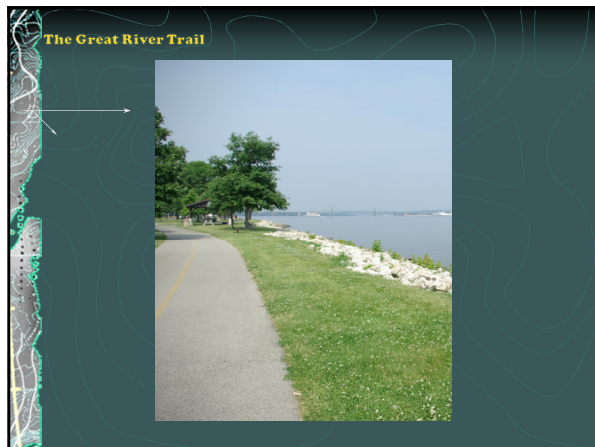
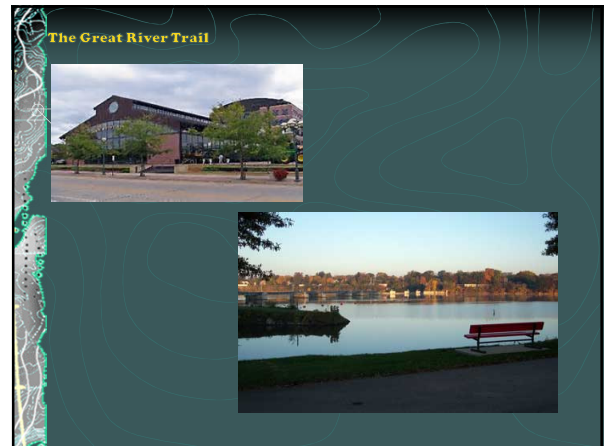
GB1

George Bellovics, 10/19/2009

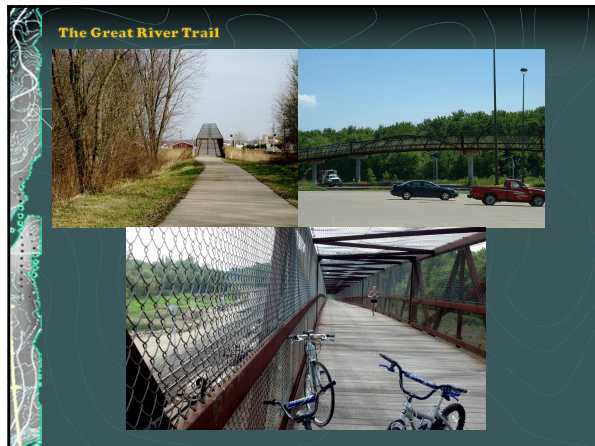












Lessons Learned:

- ┐ Large projects come from shared ideas and common goals, no matter the mode of recreation.
- ┐ The overall project is made from smaller parts that rely on connections and destinations. However, you recreate, you start by going somewhere and end up doing something.
- ┐ Took to combine activities that aren't expected...birding & biking, music & museums, etc.
- ┐ A "work in progress" means what you do have does work.
- ┐ Allow movement: Create access; Encourage involvement...Serve.
- ┐ Continue to evolve, strive to reinvent...resolve.

