

BikeSafetyQuiz.com Learning Resource for Bicyclists and Motorists



Ed Barsotti
Ride Illinois
630-978-0583
ed@rideillinois.org



Topics



1) **[BikeSafetyQuiz.com](https://www.bikesafetyquiz.com) summary**

2) BSQ uses and audiences

3) BSQ stipend program

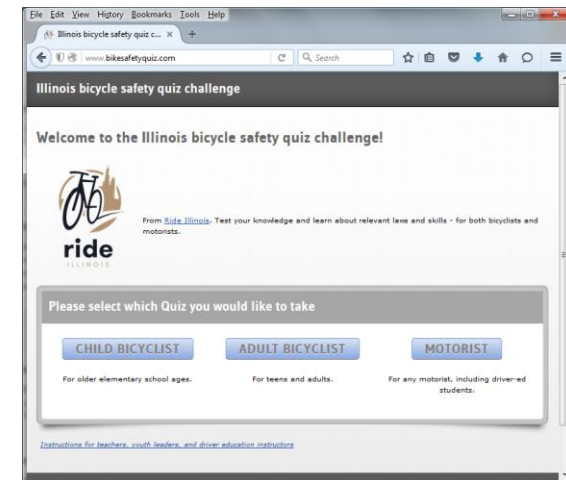
BikeSafetyQuiz.com - Motivation

- Big education gap for motorists and bicyclists on sharing the road
- In-depth classes not mainstreamed for public, schools, driver ed
- “Lots (of info) to some (people)” needs a complementary approach



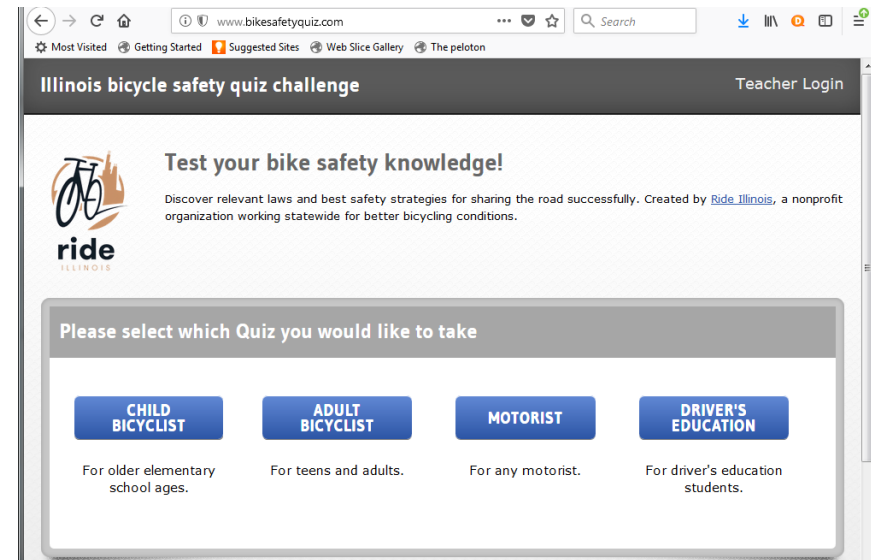
Summary of **BikeSafetyQuiz.com**

- “Some (info) to Lots (of people)”
- Convenient **lessons in a quiz format**
 - **not** a test of prior knowledge!
- Relevant state laws, skills
- >80,000 users since June 2013



Summary of **BikeSafetyQuiz.com**

- Modules for: **Adult Bicyclists, Motorists, Child Bicyclists, Driver's Education, ...**
- Bronze, Silver, Gold levels;
25-33 questions total
- Individuals, or classrooms



Adult Bicyclist - Silver | Illinois bicycle safety quiz challenge - Mozilla Firefox (Private Browsing)

File Edit View History Bookmarks Tools Help

Adult Bicyclist - Silver | Illinois bicycle safety ...

bikesafetyquiz.com/node/4763/take

palatine bicycle transportation plan

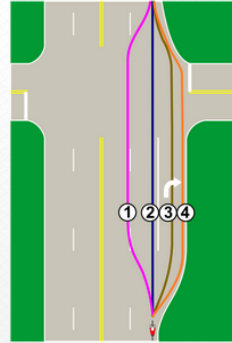
Illinois bicycle safety quiz challenge

Adult Bicyclist - Silver

Question 2 of 11

Straight with right-turn lane

When going straight at an intersection WITH a right-turn-only lane, where should you ride?



- ☐ (1) - Right edge of the left of two through lanes
- ☐ (2) - In the rightmost through lane
- ☐ (3) - Center of right turn lane
- ☐ (4) - Right edge of right-turn lane, by road's edge

NEXT

[Exit Quiz](#)

Copyright© 2013 League of Illinois Bicyclists

Multiple-choice questions, often with illustration

Adult Bicyclist - Silver | Illinois bicycle safety quiz challenge - Mozilla Firefox (Private Browsing)

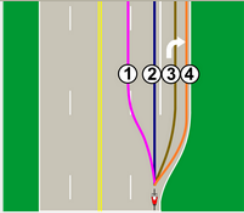
File Edit View History Bookmarks Tools Help

Adult Bicyclist - Silver | Illinois bicycle safety ...

bikesafetyquiz.com/node/4763/take

palatine bicycle transportation plan

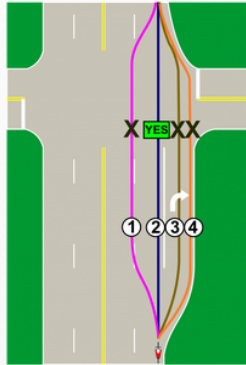
When going straight at an intersection WITH a right-turn-only lane, where should you ride?



Response:

- (1) - Right edge of the left of two through lanes
- ✓ (2) - In the rightmost through lane
- (3) - Center of right turn lane
- ✗ (4) - Right edge of right-turn lane, by road's edge

Incorrect. This puts you in position to have to make an unexpected and unsafe move across the entire right-turn lane, at the intersection. Using the rightmost lane going to your destination (straight) prevents this and allows right-turning vehicles to go. (2) is correct.



NEXT QUESTION

[Exit Quiz](#)

Explanation tailored to your right or wrong answer

Question Summary | Illinois bicycle safety quiz challenge - Mozilla Firefox (Private Browsing)

File Edit View History Bookmarks Tools Help

Question Summary | Illinois bicycle safety qu... +

bikesafetyquiz.com/quiz-summary/4763/393

palatine bicycle transportation plan

Illinois bicycle safety quiz challenge

Question Summary

End of pass #1 - results so far:

CONCEPT	RESULT
Straight without right-turn lane	Correct
Straight with right-turn lane	Incorrect
Before merging left	Incorrect
Proper helmet wearing	Correct
Vehicles parked on street	Correct
Ride far-right exceptions	Correct
Ride far-right exceptions, part 2	Incorrect
Being visible	Correct
Night riding - lights, reflectors	Correct
Bike lane intersections	Correct
Bike lane door zone	Correct

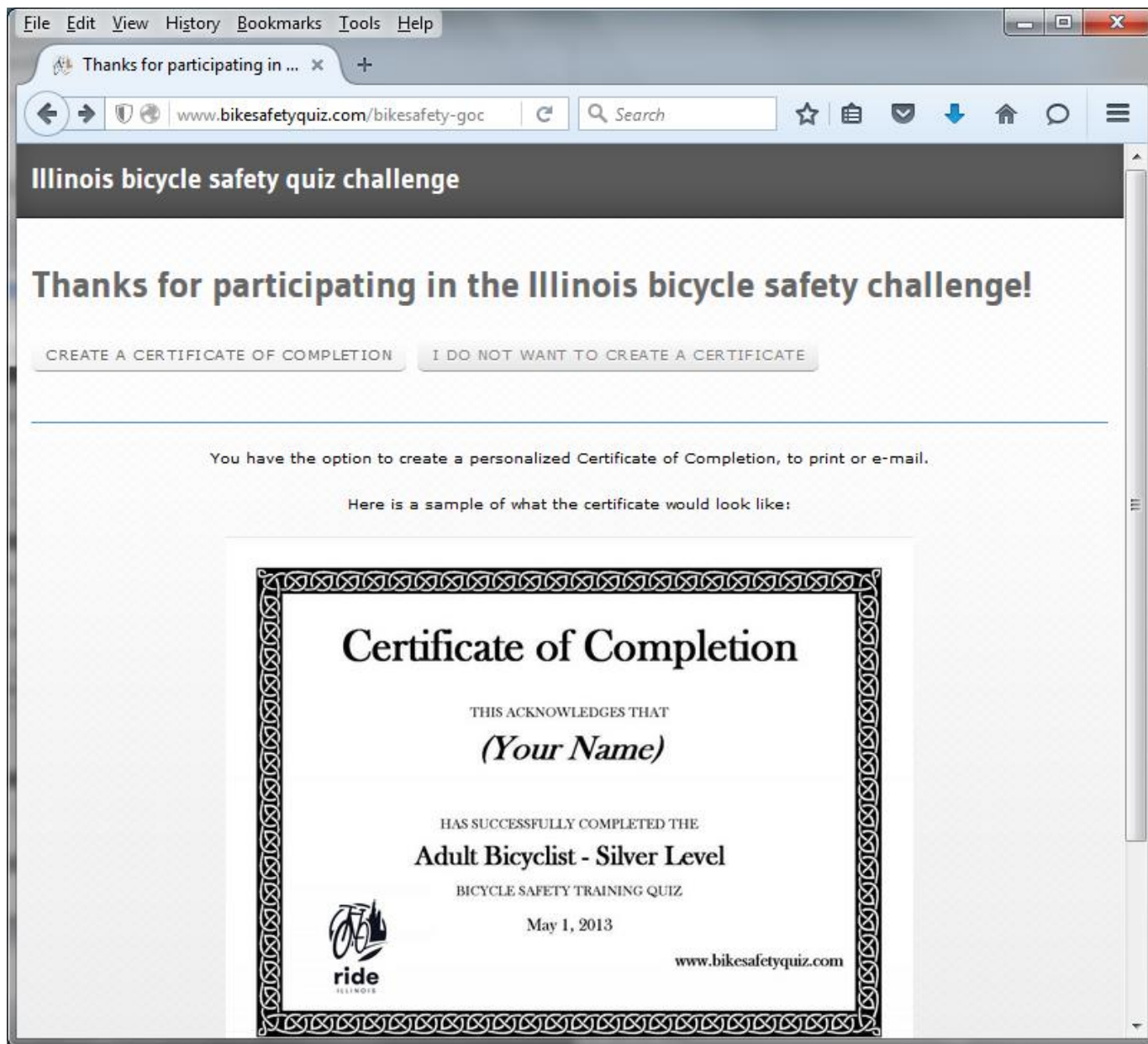
You will have 2 more chances to get 100%. Only the incorrectly answered questions will be asked again.

CONTINUE

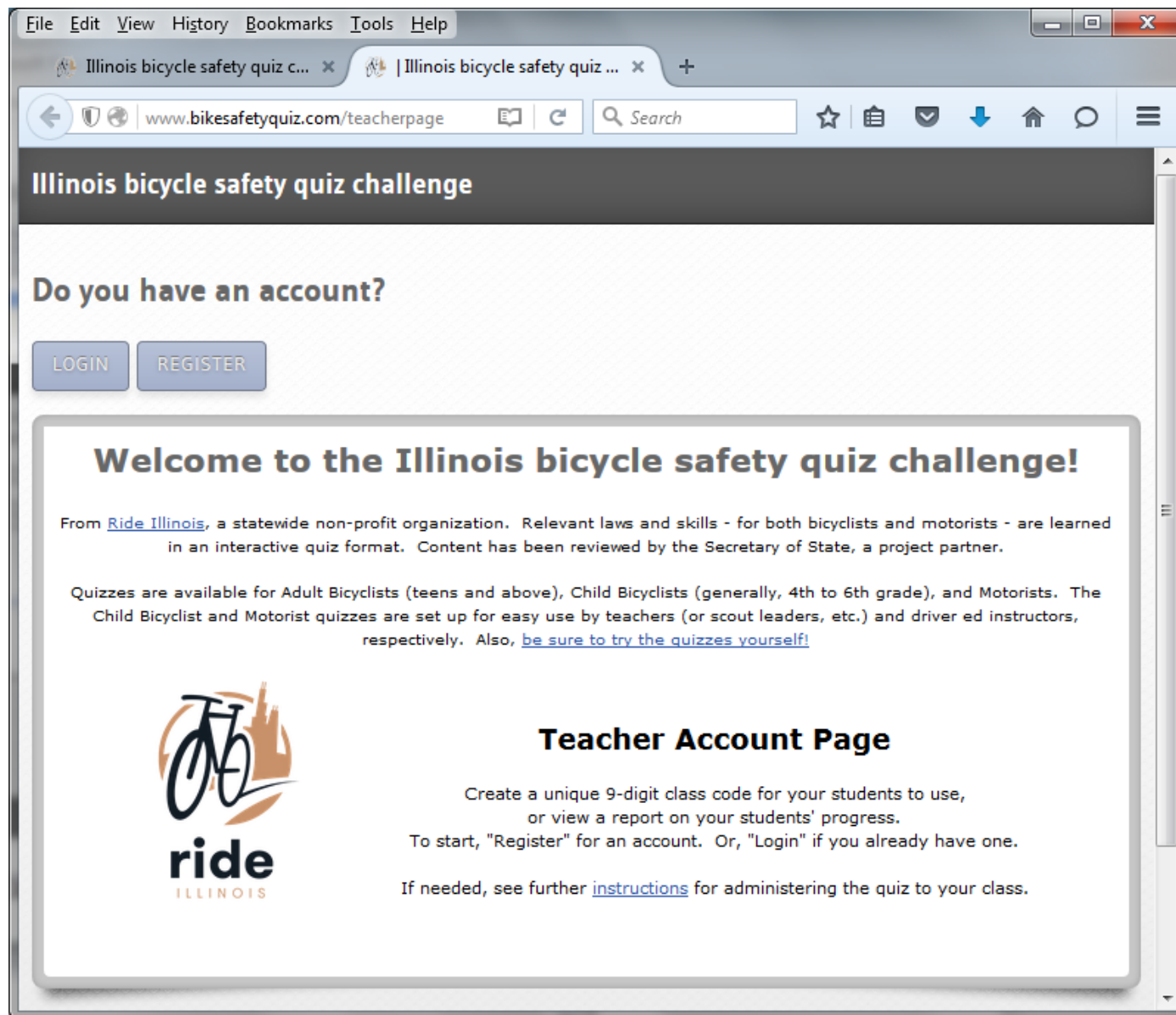
[Exit Quiz](#)

Copyright© 2013 League of Illinois Bicyclists

Must correct wrong answers before going to next level



Print or email certificate with highest level completed



Teacher account for class use, viewing results

Adult Cyclist Quiz - Topics



- Rights and responsibilities
- Intersection visibility, safety
- Correct side of road
- Narrow lane riding position
- Right-of-way at stop signs
- Legal left turns
- Riding two abreast
- Off-road bicyclist status
- Group riding
- Why follow rules and laws?
- Intersections – straight with and without right-turn lane
- Before merging left
- Proper helmet wearing
- Parked cars: weaving, door zone
- Ride far-right exceptions
- Being visible
- Night riding – lights, reflectors
- Bike lane intersections
- Tire pressure and saddle height
- Trail etiquette
- Triggering stoplights, “dead red” law
- Skewed railroad crossings
- Quick stop and quick turn
- Bike locking
- Cold weather gear
- Miscellaneous laws

Motorist Quiz - Topics



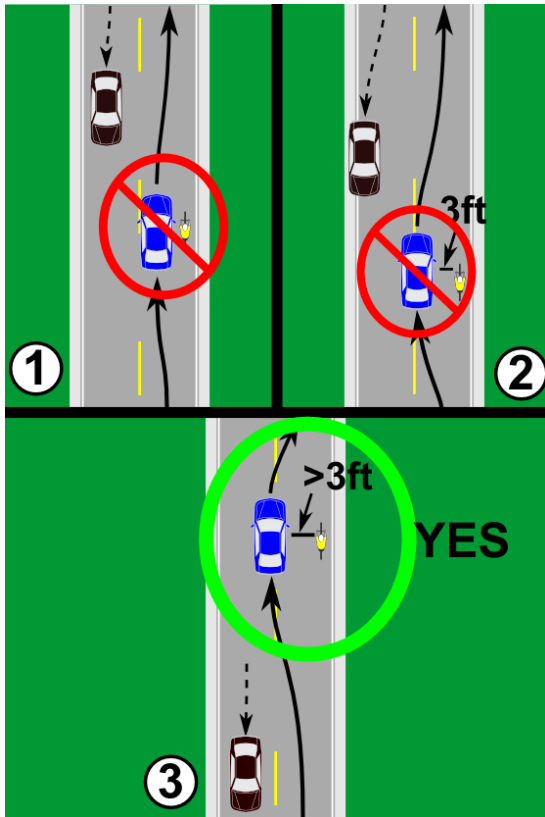
- Cyclist rights to the road
- Cyclist rules, responsibilities
- Fault in car-cyclist crashes
- 3-foot passing law
- Passing in narrow lane
- Intersection visibility, safety
- “Right-hook” mistake
- “Left-cross” mistake
- Crosswalk right-of-way
- Opening doors in parked cars
- Harassment law
- Distracted driving
- Intimidating cyclists to move
- Passing techniques
- Hints of cyclist moving left
- Right-of-way, general
- Right-of-way, 4-way stop
- Looking at stop signs
- Stopline too far back
- Correct side of road, cyclists
- Triggering stoplights
- Ride far-right exceptions
- Riding two abreast
- Bike lane intersections
- Cyclist hand signals

Topics



- 1) BikeSafetyQuiz.com summary
- 2) **BSQ uses and audiences**
- 3) BSQ stipend program

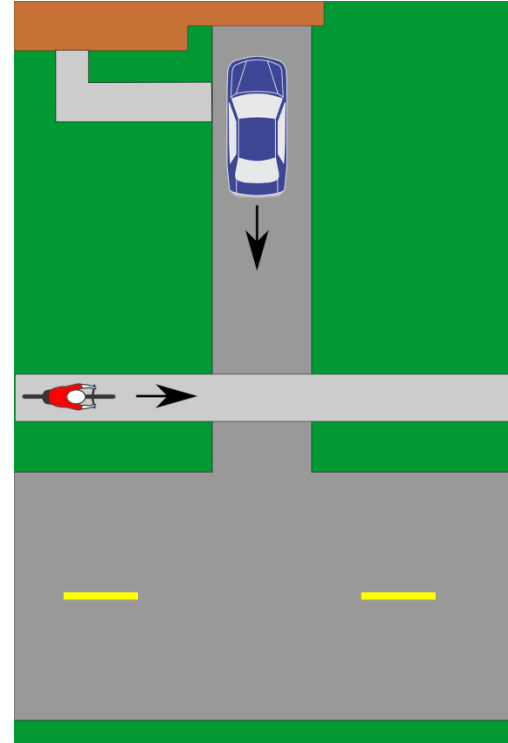
Target audiences: Driver Ed Classes



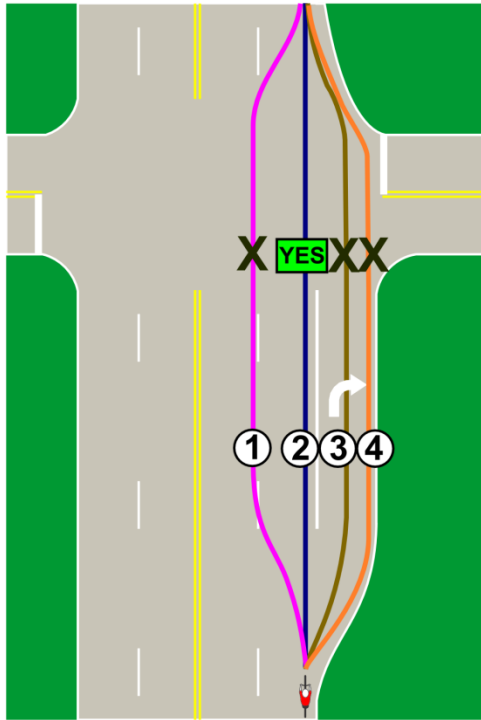
- Ready-made computer lab or homework assignment
- Instructors do not need expertise

Target audiences: Elementary Schools

- “Child Bicyclist” quiz for 4th/5th grade
 - parents help younger kids
- Plug-and-play computer lab lesson or homework
- PE class or regular class



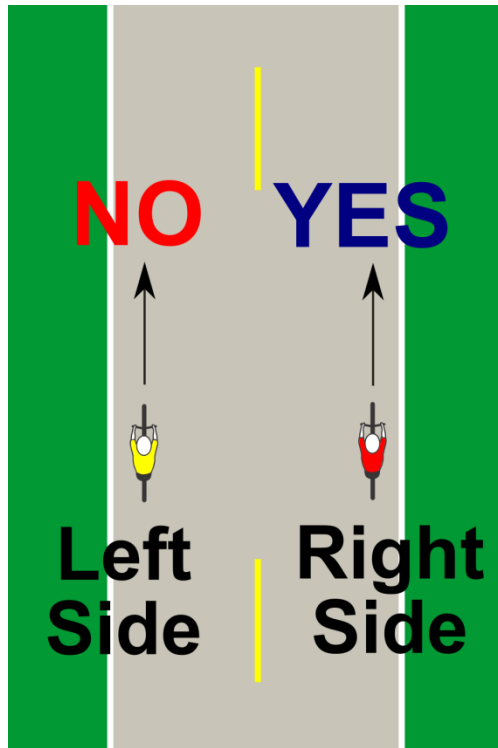
Target audiences: Police departments



- Police training/continuing ed
- School outreach
- Bicyclist ticket diversion program: complete quiz, email certificate = ticket removed
- Targeted enforcement campaigns (stings) against motorists, bicyclists

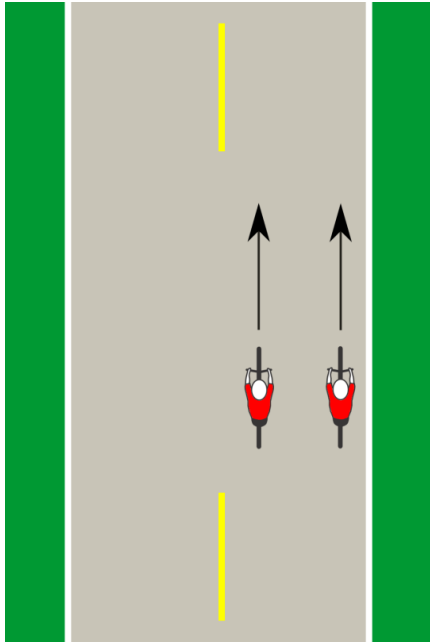
Target audiences:

Municipal outreach, mayors



- Short quiz article for city newsletters, websites
- Mayor's Bike Safety Challenge: Proclaim bike safety week, ask / incentivize residents to take quiz

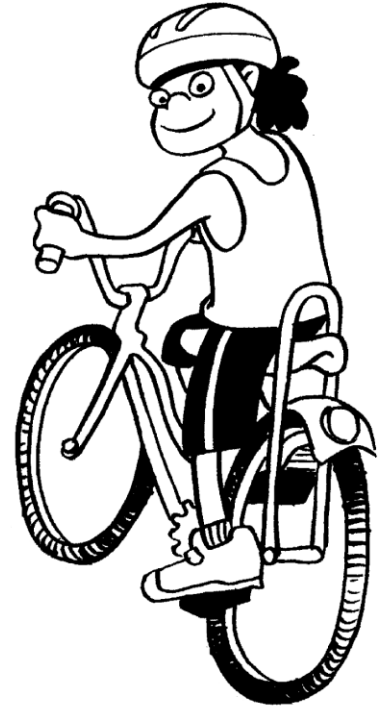
Target audiences: Bike clubs, other rides



- All members take quiz
- Organized, public rides: include quiz in ride promotions, incentivize use

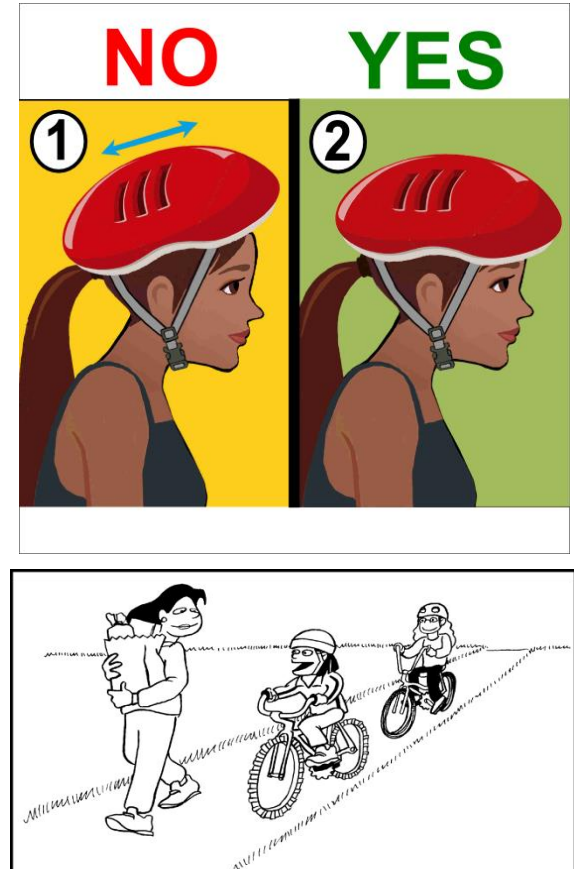
Target audiences: School PTA/PTOs

- Conduct a contest between classes, grades, or schools – highest participation rate
- Or, Family Night online activity



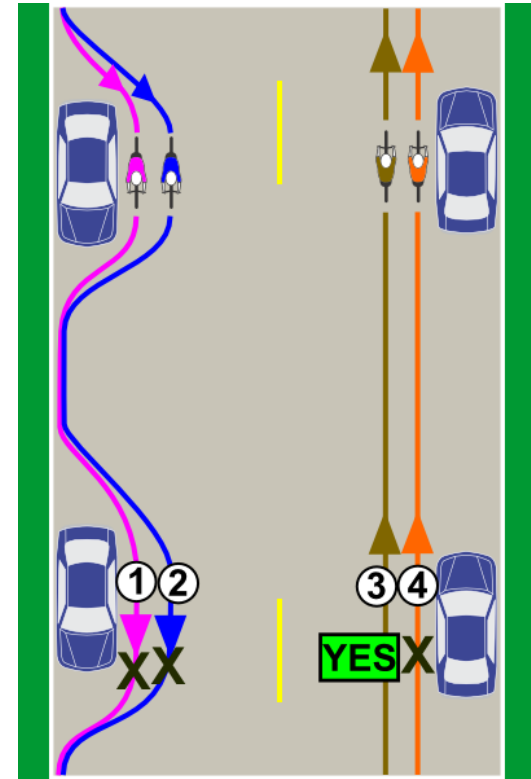
Target audiences: Scouts

- “Child Bicyclist” for young scouts, “Adult Bicyclist” for older
- Helpful for Cycling merit badge
- Prerequisite before a group ride



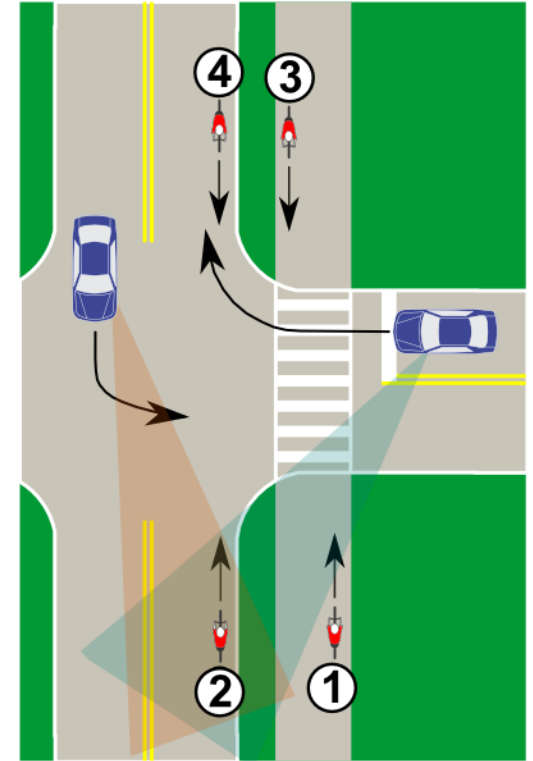
Target audiences: Bike shops

- Reach more bike riders
- Hand out quiz promo cards with new bikes, repairs, literature area
- Discounts for certificates of completion?



Various applications

- Incentives/rewards (e.g. campus bike week programs, event raffles)
- Chicago's Divvy bike share – 13th month for annual memberships
- Social media raffles for individuals



Topics



- 1) BikeSafetyQuiz.com summary
- 2) BSQ uses and audiences
- 3) **BSQ stipend program**

\$\$\$ to expand BSQ use



- Tough to get into school, driver ed curriculum!
- Financial incentives for schools can help
- Section 405 federal money for bike/ped traffic safety campaigns in higher risk states

Ride Illinois' FY18 stipend program



Section 405-funded, \$55,222, mostly mini-grants of:

- \$250 for elementary schools, driver ed programs committing to initiate BSQ use for 3+ years
- Police departments, 1 or more of 3 options:
 - \$300 for BSQ as continuing education training for officers
 - \$700 for initiating ticket diversion program
 - \$1000 for targeted enforcement at crash risk locations

Ride Illinois' FY18 stipend program

Applicants so far:

- 118 driver ed programs
- 26 elementary schools
- 16 police departments



Soon - BSQ Commercial Driver Module

- Tailor BSQ's Motorist quiz for truck, bus drivers
- Reach out to trucking companies
- Foundation funding through Elizabeth Morse



Questions?



Ed Barsotti
Ride Illinois
630-978-0583
ed@rideillinois.org

