

2018 Illinois Bike Summit
Commissioner Rebekah Scheinfeld
Chicago Department of Transportation





Bicycling

CHICAGO

AMERICA'S BEST BIKE CITY!





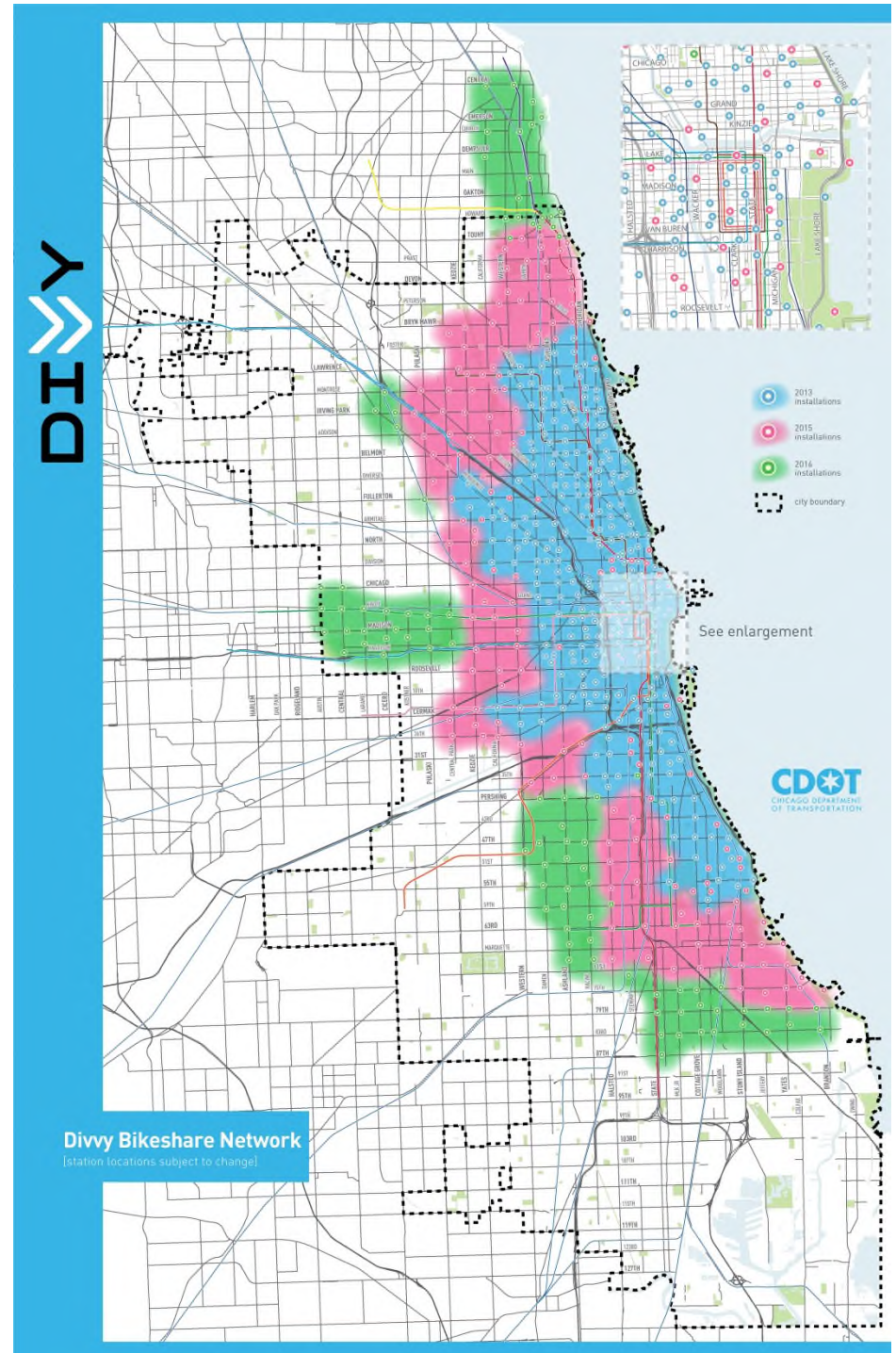
DIVVY TO DATE

Network

- 571 active stations
- 5700+ bikes
- Includes suburb of Evanston

Ridership

- 28 million+ miles traveled
- 14 million+ trips
 - 10.6 million member trips
 - 3.8 million casual trips
- ~37,000 annual members
- 1,400+ D4E members





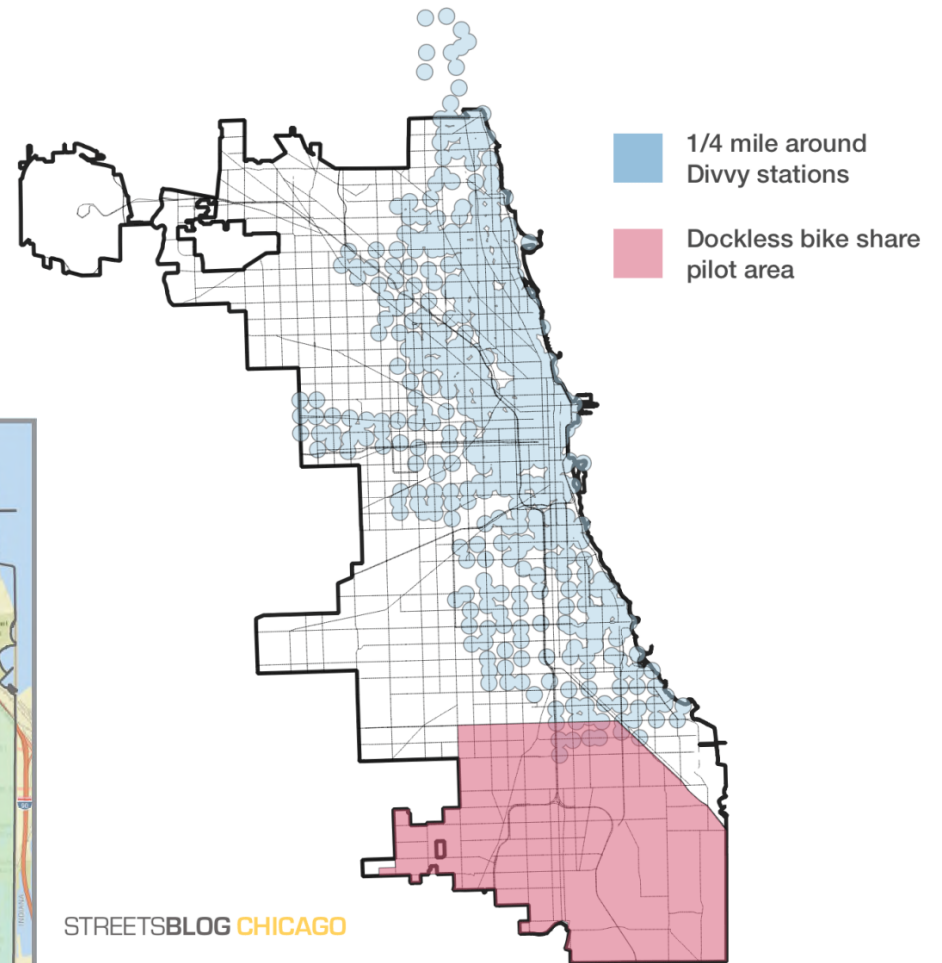
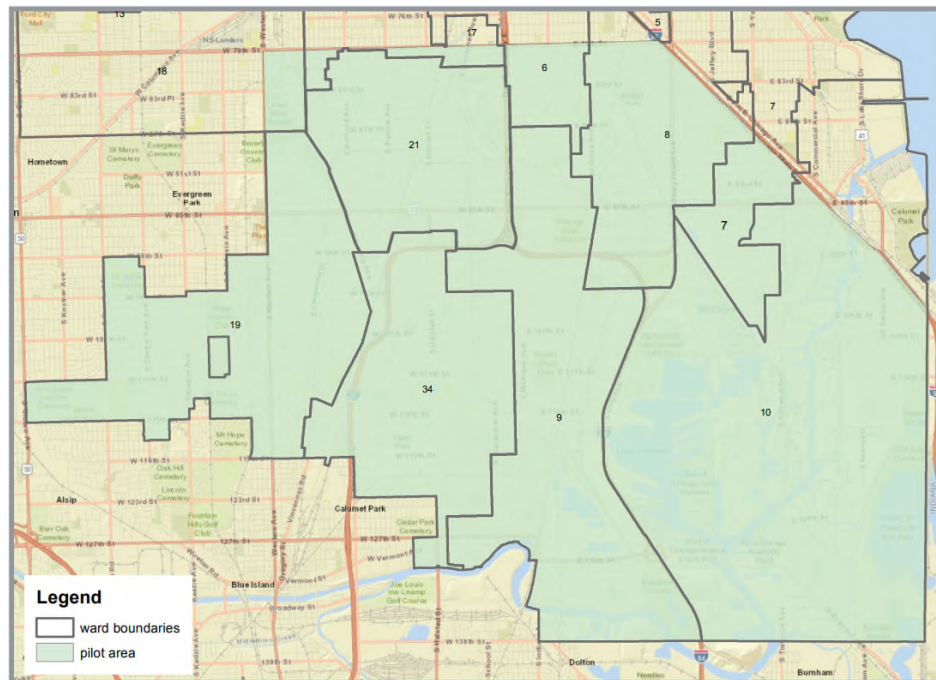
DIVVY'S REACH SINCE 2016

- 44% of the City's geography served (up from 38%)
- 64% of Chicago's population lives within ½ mile of station (up from 56%)
- 52% of population served is non-white (up from 46%)
- 11 of 15 community areas with median household income under \$30K/year served by Divvy
- 38% of Divvy stations are within one block of train station (up from 25%)

U.S. census tract data

CHICAGO DOCKLESS PILOT

- May 1 – November 1, 2018
- Maximum 250 bikes per vendor
- Lock-to requirement phase-in by July 1

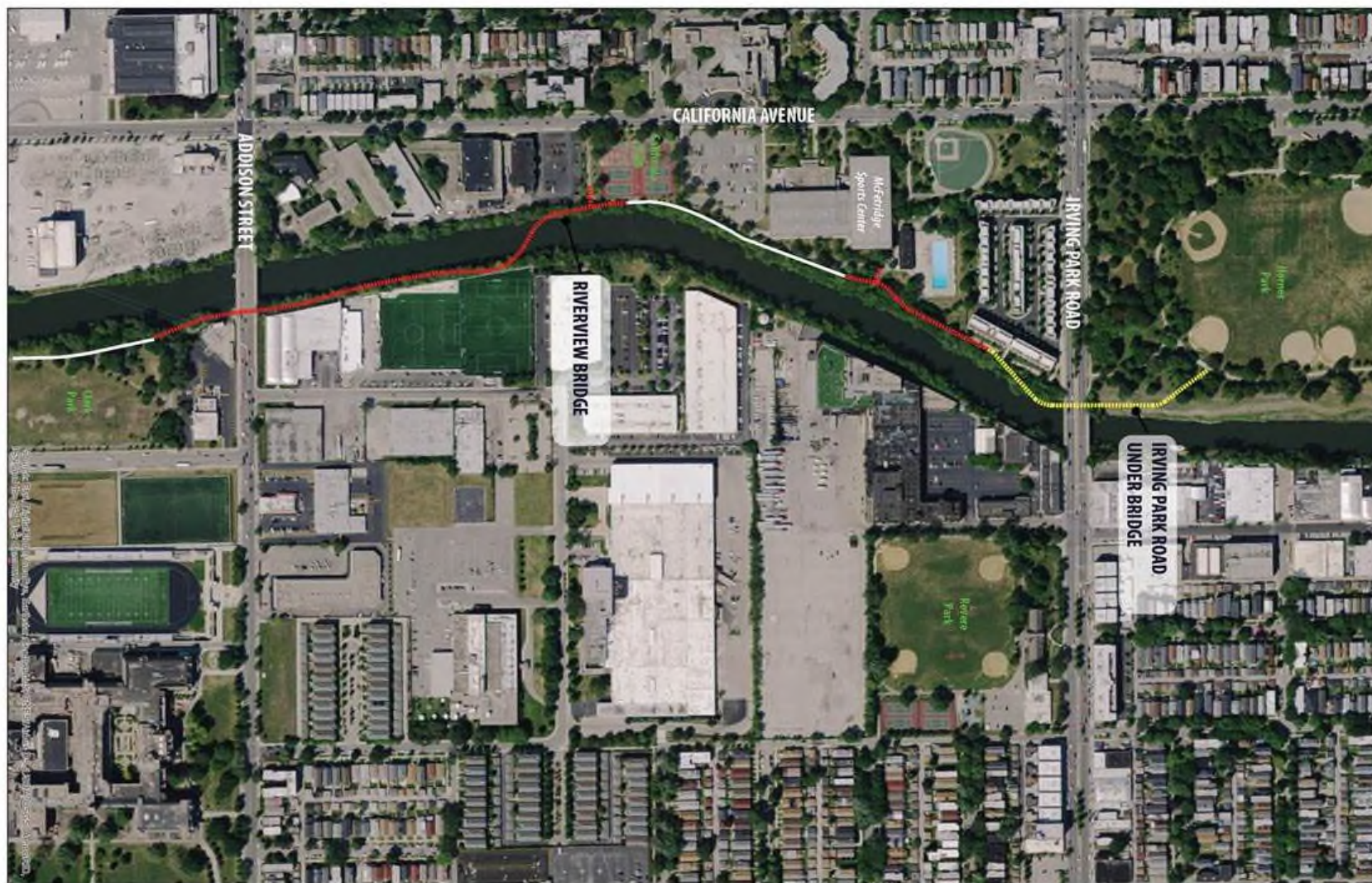


Building on BURNHAM

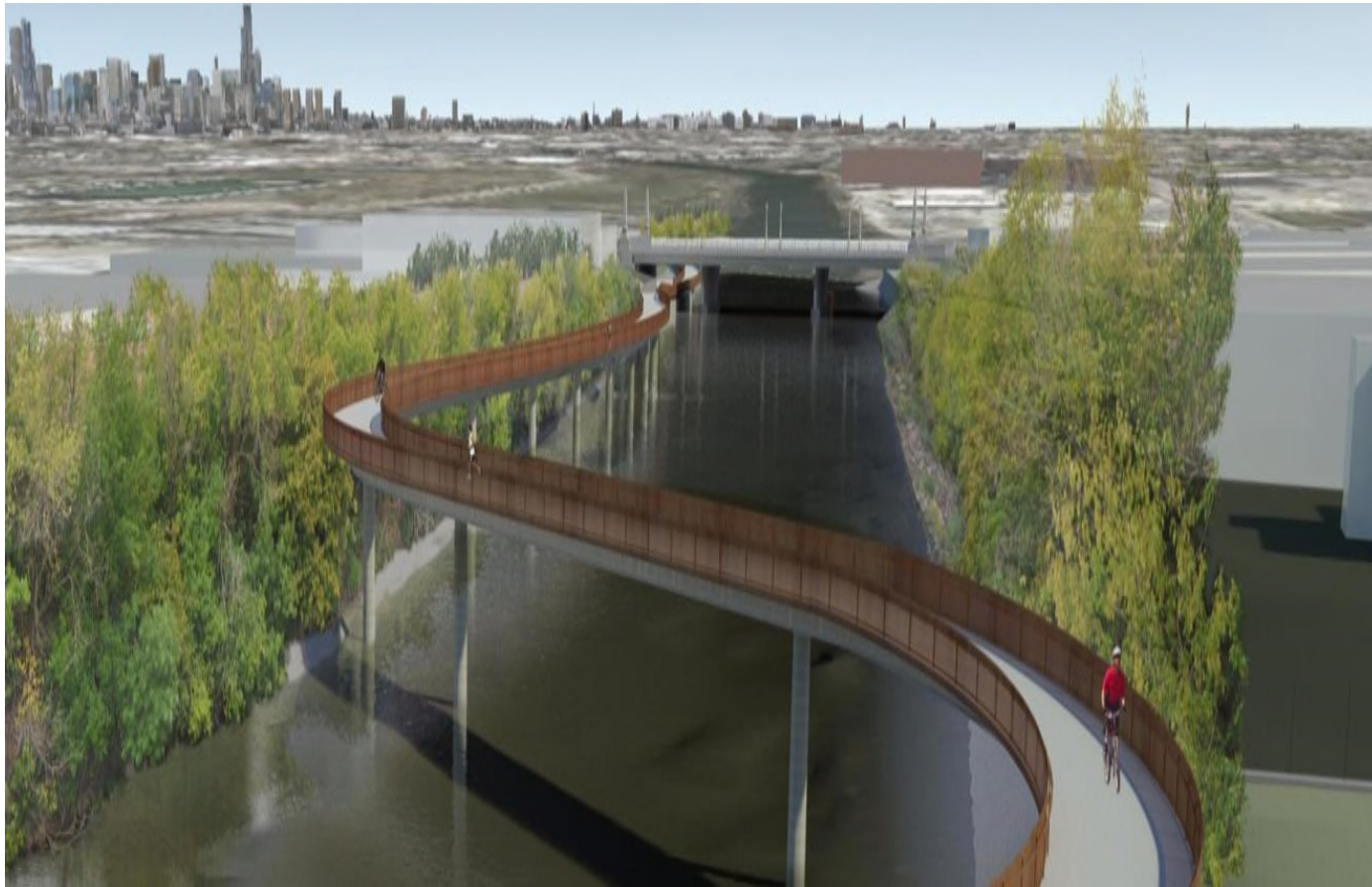




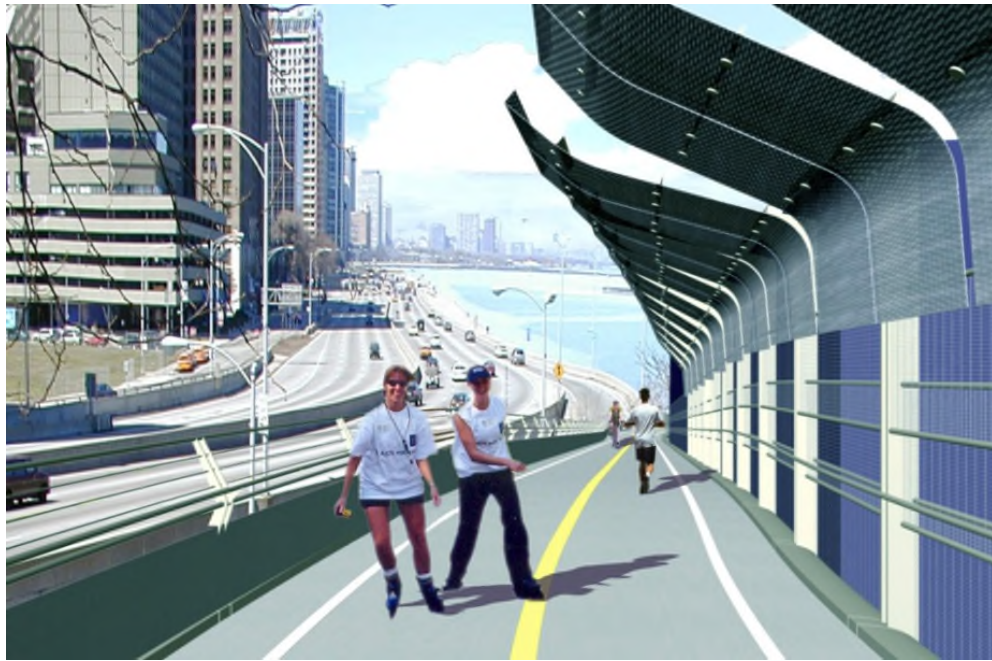
312 RiverRun



312 RiverRun



Addison/Riverview Bridge



Navy Pier Flyover



Bronzeville Bridges



35th Street Pedestrian Bridge

Completed Fall 2016



41st Street Ped Bridge Aerial Rendering

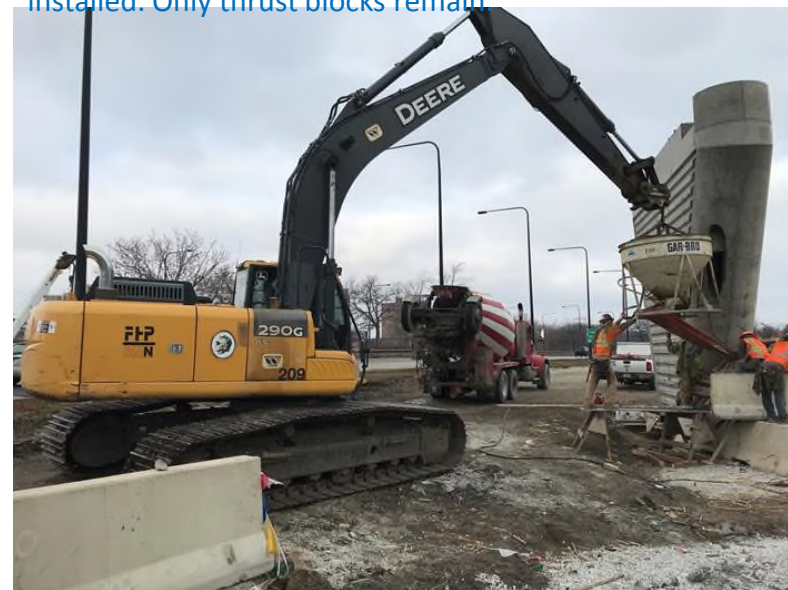
41st Street Ped Bridge Construction



Pier 3 (between Metra/CN and Lake Shore Drive) is complete.



Pier 1 concrete placement. All piers and abutments are installed. Only thrust blocks remain.



Pouring the first thrust block east of Lake Shore Drive (TB-7N).



Aerial view of Bronzeville bridges



43rd Street Pedestrian Bridge









Stay In Touch



Website

www.chicagodot.org

Twitter

[@CDOTNews](https://twitter.com/CDOTNews)

Facebook

facebook.com/CDOTNews