

THE GENESIS/VOLARE SERIES

CLUB FIT - Unisex Cycling Jersey - Raglan Sleeve

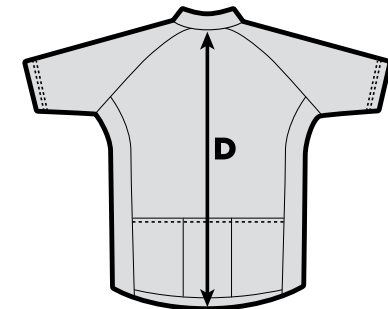
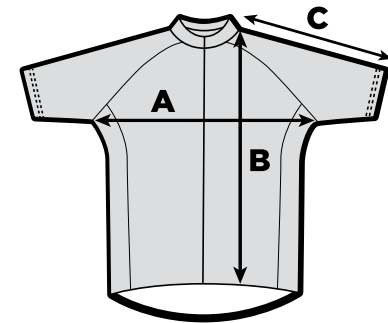
Our Unisex CLUB Fit or “Recreational Fit” jersey allows for a more generous fit around the mid-section. The waist does not taper on the CLUB Fit. If you are looking for a CLUB fit we also recommend that you specify the omitting of the Silicone Gel Grippy along the waist. This gives you a polo T Shirt open feel.

- Note: All measurements are approximate.
- Our Size Chart is NOT the body size. It is a clothing size for FIT.
- **WE HIGHLY SUGGEST** Measuring a Jersey or T-shirt you already own. Lay the T-shirt or jersey on a flat surface and use the guide to measure the 1/2 chest from armpit to armpit. Compare those measurements to the chart. (Please specify, if you want the silicone grip removed for a more open fit)



UNISEX CLUB FIT

	A. Chest Width	B. Front Length	C. Sleeve Length	D. Back Length
2X Small	18.25" (46.5cm)	24.25" (61.5cm)	13.25" (34cm)	25.5" (65cm)
X Small	19" (48cm)	24.75" (63cm)	13.75" (35cm)	26" (66cm)
Small	19.75" (50.5cm)	25.25" (64cm)	14" (36cm)	26.75" (68cm)
Medium	20.5" (52cm)	25.75" (65.5cm)	14.5" (37cm)	28" (71cm)
Large	20.75" (53cm)	27" (69cm)	14.75" (38cm)	28.5" (72cm)
X Large	21.25" (54cm)	28" (71cm)	15.25" (39cm)	29" (73.5cm)
2X Large	22.5" (57cm)	28.5" (72.5cm)	15.75" (40cm)	30" (76cm)
3X Large	23.25" (59cm)	29.5" (75cm)	16" (41cm)	30.75" (78cm)
4X Large	24" (61cm)	30.5" (77cm)	16.5" (42cm)	32.25" (82cm)
5X Large	24.75" (63cm)	31" (79cm)	17" (43cm)	33" (84cm)
6X Large	25.5" (65cm)	31.75" (81cm)	17.25" (44cm)	34" (86cm)
7X Large	25.75" (67cm)	32.75" (83cm)	17.75" (45cm)	34.5" (88cm)



Note: Our Custom Cycling Jerseys are all hand made pieces. • We first print the bolts of fabric in a template. • After this we cut, assemble and sew. During the creation process there may be a small natural variation on sizing that should not exceed One Half of an inch on any measurement. You will be pleased to know we DO NOT charge extra for our extra large sizes.

THE GENESIS/VOLARE SERIES

SPORT FIT - Unisex Cycling Jersey - Raglan Sleeve

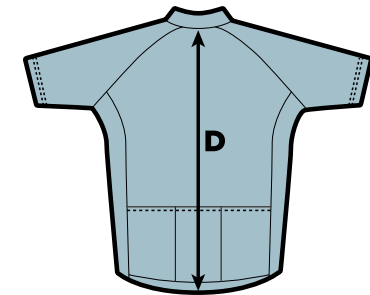
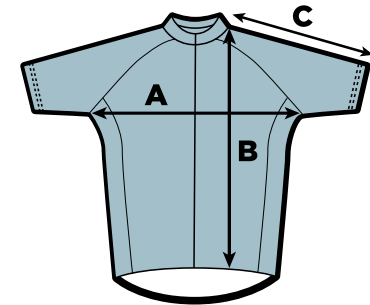
SPORT FIT is designed for a more gender specific body contouring fit. This cycling jersey is a true classic as we scoured the world to find the just the right fabrics. This series is built in smaller increments giving you more choices and a better fit..

- Note: All measurements are approximate.
- Our Size Chart is NOT the body size. It is a clothing size for FIT.
- **WE HIGHLY SUGGEST** Measuring a Jersey or T-shirt you already own. Lay the T-shirt or jersey on a flat surface and use the guide to measure the 1/2 chest from armpit to armpit. Compare those measurements to the chart. (Please specify, if you want the silicone grip removed for a more open fit)



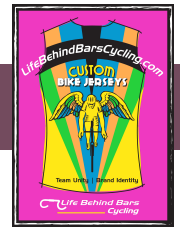
MEN'S SPORT FIT

	A. Chest Width	B. Front Length	C. Sleeve Length	D. Back Length
2X Small	18.25" (46.5cm)	23.25" (59cm)	13.25" (34cm)	24.5" (62cm)
X Small	19" (48cm)	23.75" (60.5cm)	13.75" (35cm)	25" (63.5cm)
Small	19.75" (50.5cm)	24.25" (61.5cm)	14" (36cm)	25.75" (65.5cm)
Medium	20.5" (52cm)	24.75" (63cm)	14.5" (37cm)	27" (68.5cm)
Large	20.75" (53cm)	26" (66cm)	14.75" (38cm)	27.5" (70cm)
X Large	21.25" (54cm)	27" (68.5cm)	15.25" (39cm)	28" (71cm)
2X Large	22.5" (57cm)	27.5" (70cm)	15.75" (40cm)	29" (73.5cm)
3X Large	23.25" (59cm)	28.5" (72.5cm)	16" (41cm)	29.75" (75.5cm)
4X Large	24" (61cm)	29.5" (75cm)	16.5" (42cm)	31.25" (79.5cm)
5X Large	24.75" (63cm)	30" (76cm)	17" (43cm)	32" (81cm)
6X Large	25.5" (65cm)	30.75" (78cm)	17.25" (44cm)	33" (84cm)
7X Large	25.75" (67cm)	31.75" (80.5cm)	17.75" (45cm)	33.5" (85cm)



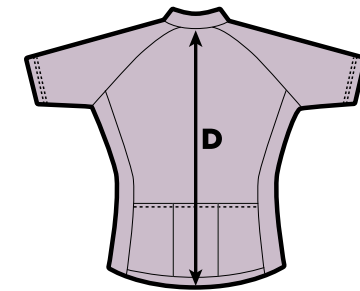
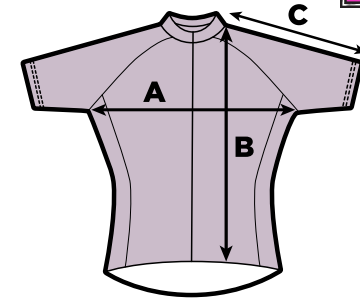
Note: Our Custom Cycling Jerseys are all hand made pieces. • We first print the bolts of fabric in a template. • After this we cut, assemble and sew. During the creation process there may be a small natural variation on sizing that should not exceed One Half of an inch on any measurement. You will be pleased to know we DO NOT charge extra for our extra large sizes.

THE GENESIS/VOLARE SERIES



WOMEN'S SPORT FIT

	A. Chest Width	B. Front Length	C. Sleeve Length	D. Back Length
2X Small	15.5" (39cm)	20.5" (52cm)	10.25" (26cm)	22.5" (57cm)
X Small	16.25" (41cm)	22" (56cm)	10.75" (27cm)	23.75" (60cm)
Small	17.25" (43.5cm)	22.75" (58cm)	11.75" (29.5cm)	24.5" (62cm)
Medium	18.25" (46cm)	24" (61cm)	11.75" (30cm)	25" (63.5cm)
Large	19" (48cm)	24.75" (63cm)	12.25" (31cm)	25.5" (65cm)
X Large	20" (51cm)	25.5" (65cm)	12.5" (32cm)	26.75" (68cm)
2X Large	20.75" (53cm)	26" (66cm)	13" (33cm)	28" (71cm)
3X Large	21" (53.5cm)	26.5" (67cm)	13.5" (35cm)	28.5" (72cm)
4X Large	21.5" (54.5cm)	27" (68.5cm)	13.75" (35cm)	29.5" (75cm)
5X Large	22.5" (57cm)	27.5" (70.5cm)	14.25" (36cm)	31.25" (79.5cm)



CHILDREN'S SPORT FIT

	A. Chest Width	B. Front Length	C. Sleeve Length	D. Back Length
2X Small	10.25" (26cm)	17.75" (45cm)	7.5" (19cm)	19" (48cm)
X Small	11.5" (29.5cm)	19.25" (49cm)	8" (20cm)	20.5" (52cm)
Small	12.5" (31.5cm)	21" (53cm)	8.25" (21cm)	22" (56cm)
Medium	13.5" (33cm)	22" (56cm)	8.5" (22cm)	23.5" (59cm)
Large	14" (33.5cm)	23.75" (60.5cm)	9" (23cm)	24.75" (63cm)
X Large	15" (38.5cm)	26" (66cm)	9.4" (24cm)	27" (69cm)

